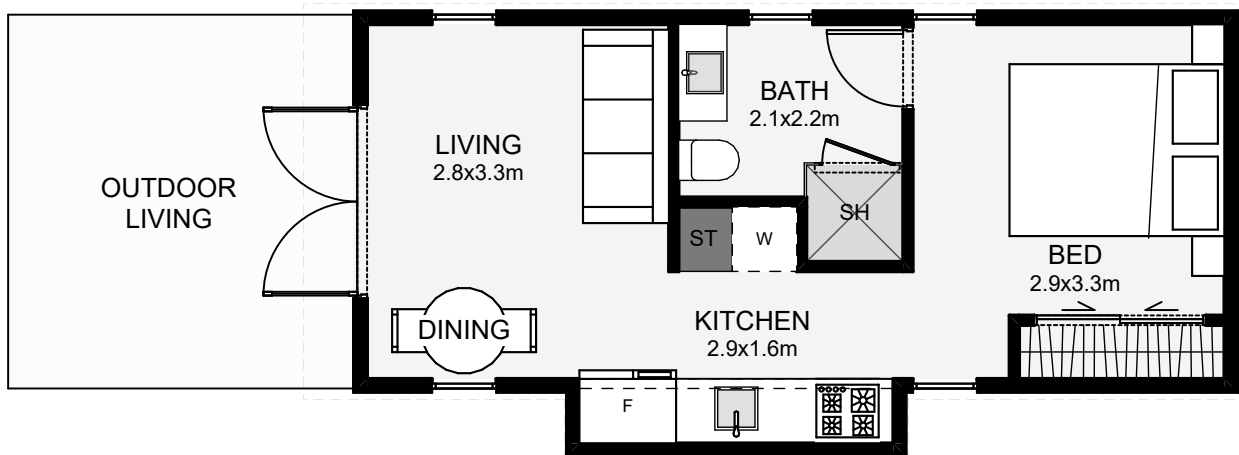




This small 30m² dwelling is designed to suit properties with limited space or where a narrow build is preferred. The kitchen and bathroom separate living from sleep quarters with the option for a sliding door between. The mono-pitch roof is designed to give you the opportunity of having a high ceiling in the living, making the space feel larger in size. If you're looking for a small dwelling with modern styling, you've just found it!



Floor Area: 30m²

 0
  1
  1
  1
  8.2m
  4.1m

Phone: (06) 3774433
 Mobile: 0274 484728
 Email: warwick@designercourt.co.nz
www.competitivehomeswairarapa.com



COMPETITIVEHOMES
WAIRARAPA