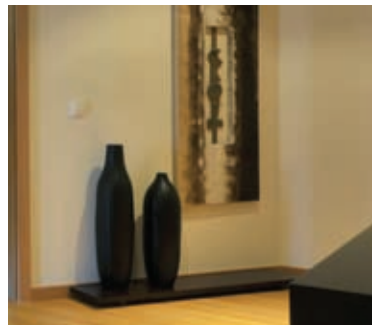




Ideal for compact living, this home with generous open plan design delivers practicality and style in one.

- Spacious open-plan living
- Easy indoor/outdoor flow
- 2 bedrooms
- Bathroom includes laundry

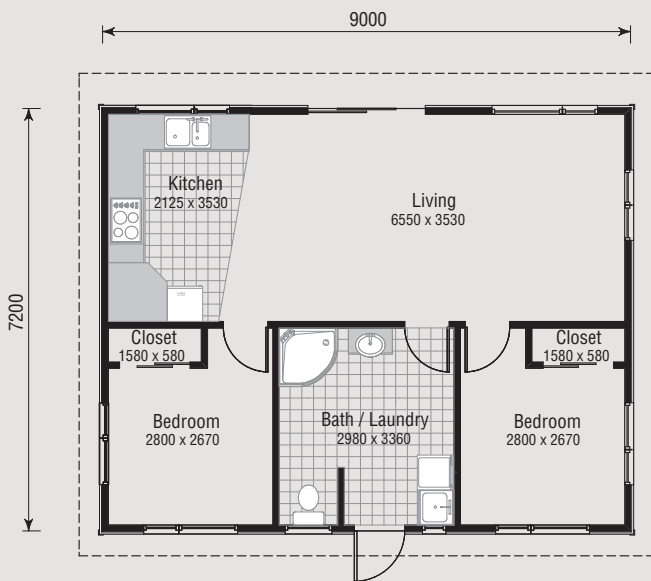


2  1  1 

## 3D FLOOR PLAN



## FLAT FLOOR PLAN



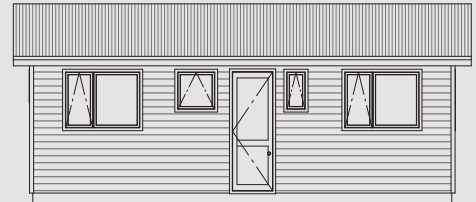
### BH65 Floor Plan

Plan area over frame: 65m<sup>2</sup>  
 Building perimeter over frame: 33m

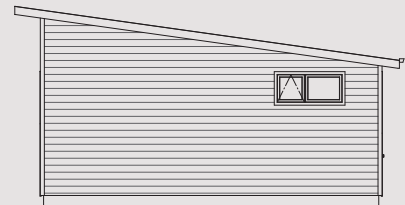
### Features:

- Open plan living
- 2 bedrooms
- Bathroom incl. laundry

House Area 65m<sup>2</sup>



ELEVATION 1



ELEVATION 2



ELEVATION 3



ELEVATION 4